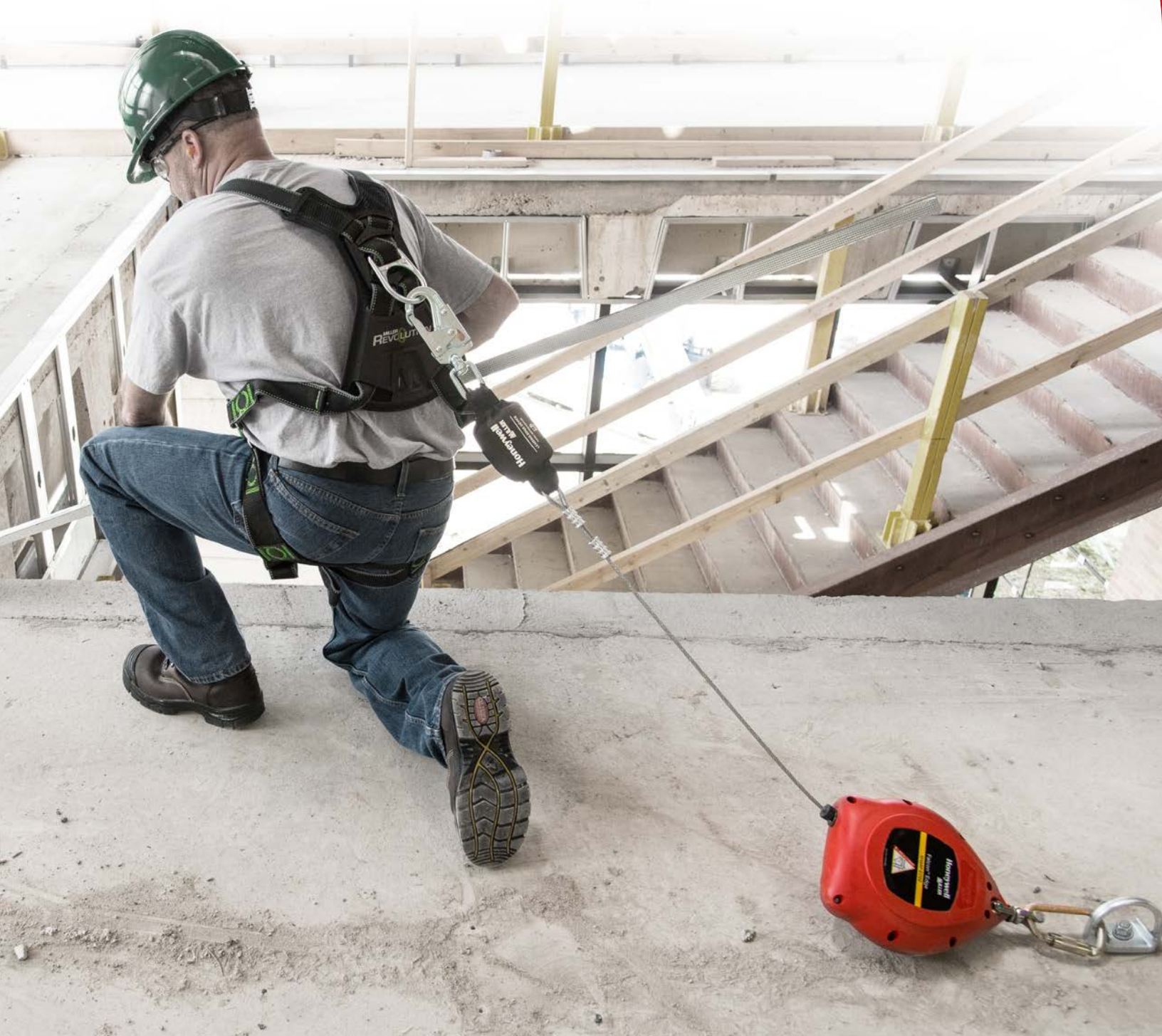


**Honeywell**  
**MILLER**



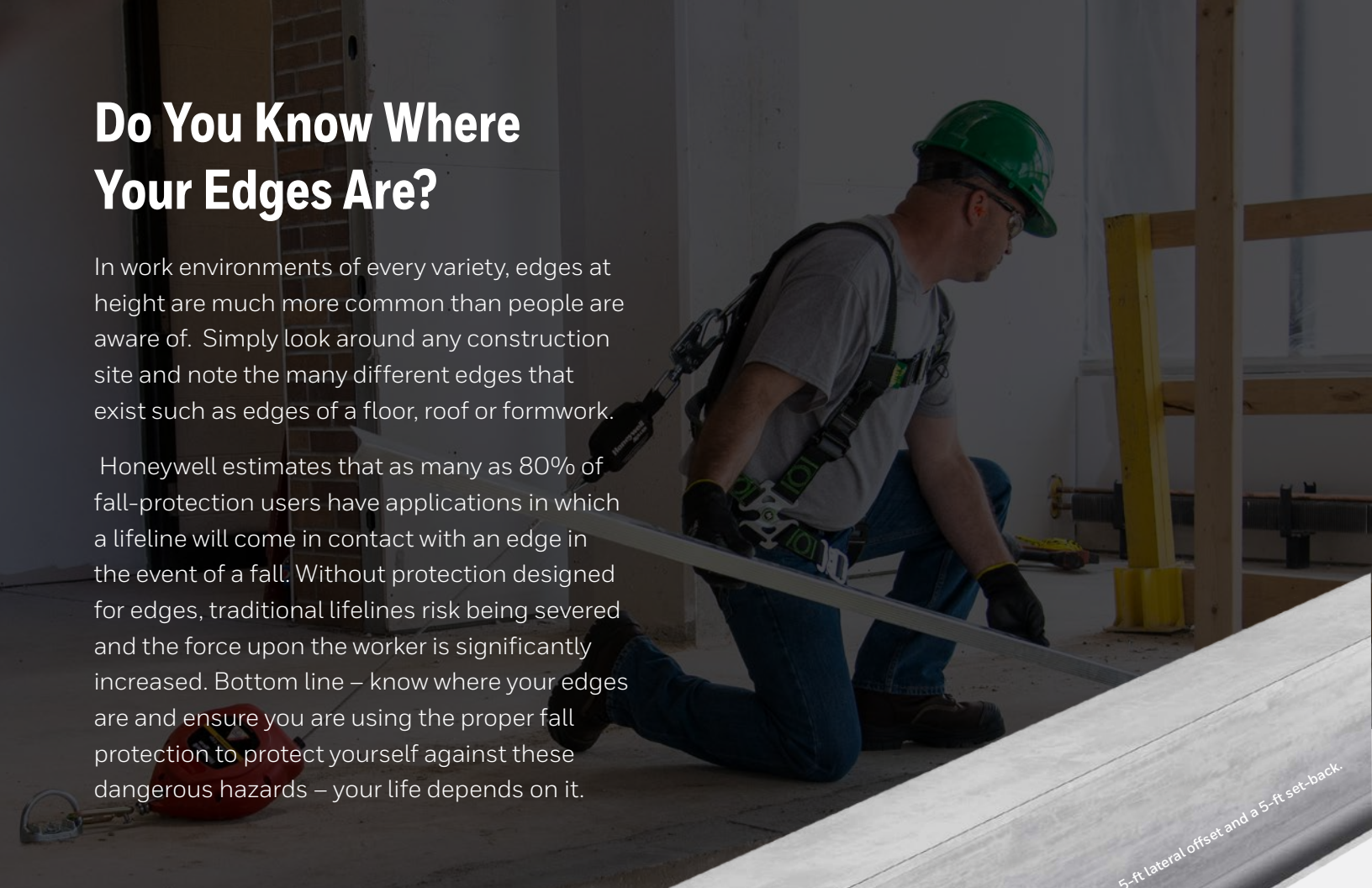
## **Miller® Falcon™ Edge Self-Retracting Lifeline**

When the Job Takes You to the Edge: Depend on Miller

# Do You Know Where Your Edges Are?

In work environments of every variety, edges at height are much more common than people are aware of. Simply look around any construction site and note the many different edges that exist such as edges of a floor, roof or formwork.

Honeywell estimates that as many as 80% of fall-protection users have applications in which a lifeline will come in contact with an edge in the event of a fall. Without protection designed for edges, traditional lifelines risk being severed and the force upon the worker is significantly increased. Bottom line – know where your edges are and ensure you are using the proper fall protection to protect yourself against these dangerous hazards – your life depends on it.



Application images show an anchorage connection with a 5-ft lateral offset and a 5-ft set-back.  
See instruction manual for additional information

## ANSI's New Safety Standard

As awareness of this threat is increasingly on the rise, new safety standards have been defined. The most stringent is ANSI Z359.14-2014 LE which requires leading edge connecting devices to meet criteria such as:

- Edge radius as sharp as 0.005 in (0.13 mm)
- Safe for users connected at foot level
- Requires an integral shock-absorber attached to the end of the lifeline connected to the worker

# The Versatility You Need. The Safety You Depend On.

Designed for performance in edge applications, Falcon Edge SRLs offer versatility, reliability, and enhanced safety.

## Safe

- Designed for sharp edge applications with an edge radius of  $\geq 0.005$  in (0.13 mm)
- Provides protection in applications that require anchoring at foot level
- Meets many stringent safety standards, including ANSI Z359.14 Class B & LE

## Versatile

- **Perfectly suits your personal profile, with the capacity to support user weights up to 420-lbs. in all connections at foot level and above**
- Designed to provide protection for all working at height situations – horizontal, vertical, mounted overhead, anchored at foot level and work near edges
- Available in 20, 30, and 50-ft. working lengths to cover a wide range of applications
- **Models available for welding applications include a shock absorber cover that is flame retardant and resistant to weld splatter**

## Reliable

- **Durable design with corrosion resistant internal components extend service life and lowers cost of ownership**
- **Up to 30% lighter than competitive models for easier installation and transportation to reduce worker fatigue and increase productivity**
- Thicker galvanized cable (7/32") increases durability to lower cost of ownership
- **Equipped with RFID for efficient asset and inspection tracking**
- Repairable with quick turnaround time, lowers cost of ownership and increases productivity



### ① Steel Double Locking Carabiner

Steel carabiner (and tagline) included for **easier connection and installation.**

### ② Built-in Handle

Built-in, ergonomically-designed molded handle on 30-ft. & 50-ft. models **designed to provide easy installation and transportation**

### ③ Dual Swivels

Dual swivels at top of unit and on snap hook **increase mobility** and minimize lifeline from twisting during use

### ④ Enhanced Impact Resistant Nylon Housing

Withstands the harsh rigors of the toughest applications for **increased durability to extend service life and to lower cost of ownership**

### ⑤ Unique Side Payout Design

Reduces wear on the entry guide bushing and cable providing smooth operation with less drag to **increase user mobility.** Internal entry guide bushing and roller prevent cable from cutting into housing for **increased durability**

### ⑥ Integral Shock Absorber

**Integral shock absorber connected to the worker** ensures the lifeline is kept intact if a fall were to occur over an edge to **increase safety**

### ⑦ RFID Technology

RFID for **easy and efficient asset tracking**

### ⑧ Durable Shock Absorber Cover

Ballistic nylon shock absorber cover for **increased durability** (flame retardant shock absorber cover for welding applications also available).

## Miller® Falcon™ Edge Self-Retracting Lifelines

### Galvanized Steel Cable Lifeline with Integrated Shock Absorber, Carabiner, and Tagline.

SKU	Length	Lifeline Connector	Unit Weight (Lbs.)
MP20G-LE	20-ft. (6 m)	Steel Locking Swivel Snap Hook	11.0 lbs. (5 kg)
MP30G-LE	30-ft. (9 m)		14.3 lbs. (7 kg)
MP50G-LE	50-ft. (15 m)		17.4 lbs. (8 kg)

### Galvanized Steel Cable Lifeline with Integrated Shock Absorber with flame retardant cover for welding applications, Carabiner, and Tagline.

SKU	Length	Lifeline Connector	Unit Weight (Lbs.)
MP20G-LEK	20-ft. (6 m)	Steel Locking Swivel Snap Hook	11.0 lbs. (5 kg)
MP30G-LEK	30-ft. (9 m)		14.3 lbs. (7 kg)
MP50G-LEK	50-ft. (15 m)		17.4 lbs. (8 kg)

**Honeywell has your back with a full range of leading edge self-retracting lifelines and personal fall limiters, including the Miller® TurboLite™ Edge Series.**



#### Limitless Possibilities. Ask the Expert.

Technical Service: 800.873.5242  
[www.millerfallprotection.com](http://www.millerfallprotection.com)

#### Honeywell Industrial Safety

900 Douglas Pike  
 Smithfield, RI 02917

USA:

Phone: 800.430.5490

Fax: 800.322.1330

[www.honeywellsafety.com](http://www.honeywellsafety.com)

Canada:

Phone: 888.212.7233

Fax: 888.667.8477

LMFEB

© 2017 Honeywell International Inc.

**Honeywell**